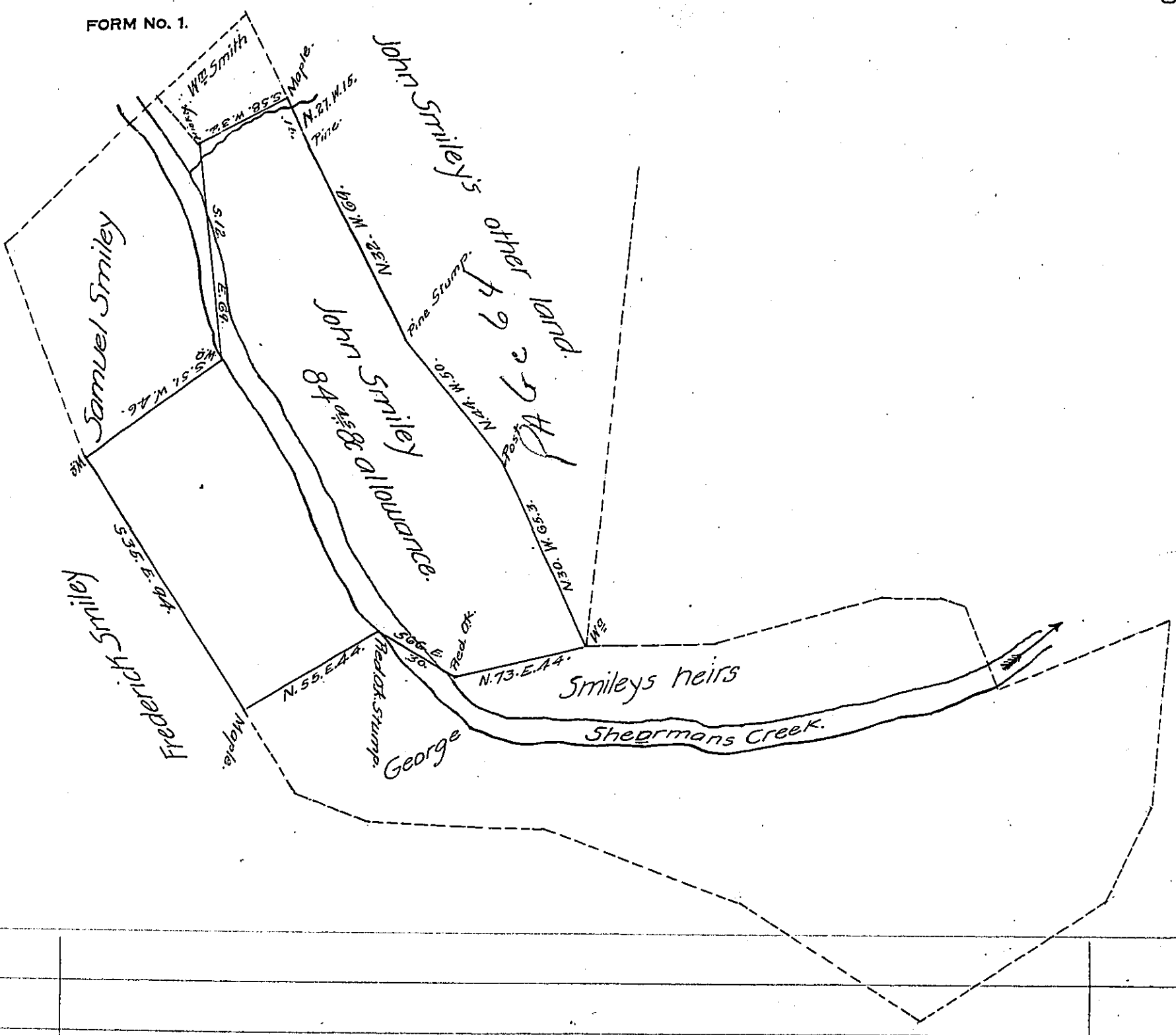


FORM NO. 1.



Draught of land Situate in Wheatfield, Frye, & Tyrone Townships
 Perry County Containing Eighty Four Acres & allowance of Six per
 cent for roads & part of 241^{acs} 131^{acs} & allowance Surveyed the 17th
 day of August 1814 Warrant granted to William Smiley dated Feb-
 ruary 3^d 1755.

Surveyed the Above part in black lines March 6th 1832. for
 John Smiley to patent.

J. W^o Wilson D.S.

Jacob Spangler Esq S.G.

IN TESTIMONY that the above is a copy of the original remaining on file in
 the Department of Internal Affairs of Pennsylvania, made
 conformably to an Act of Assembly approved the 16th day of
 February 1833, I have hereunto set my hand and caused
 the Seal of said Department to be affixed at Harrisburg,
 this Third day of January 1907.

Laac P. Brown
 Secretary of Internal Affairs.